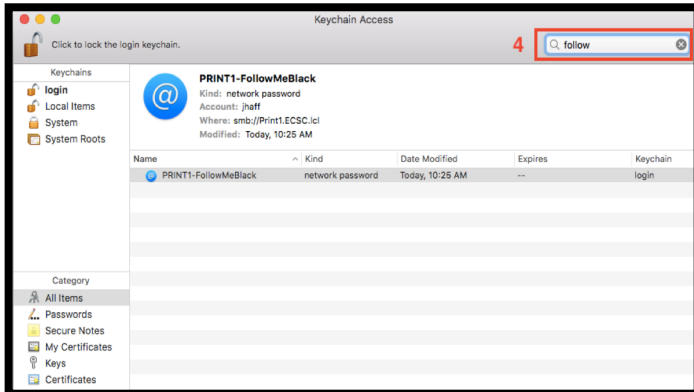
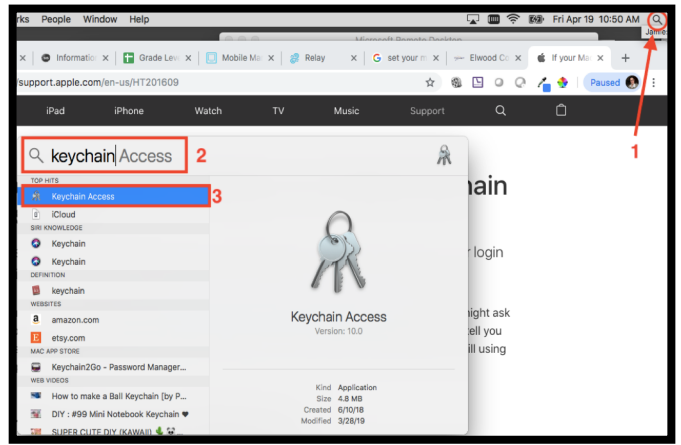
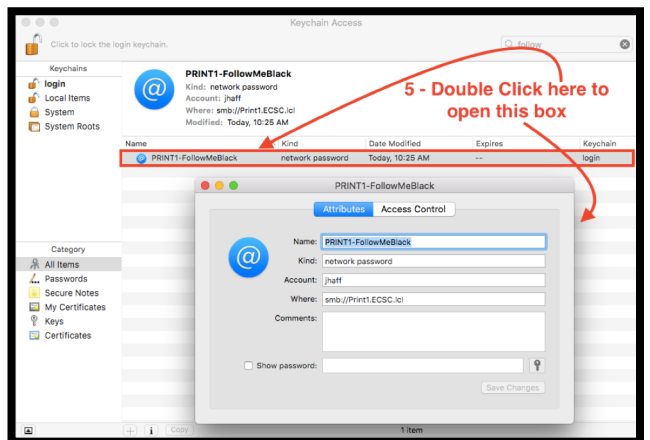


UPDATING YOUR 'FOLLOWME' PRINTER PASSWORDS

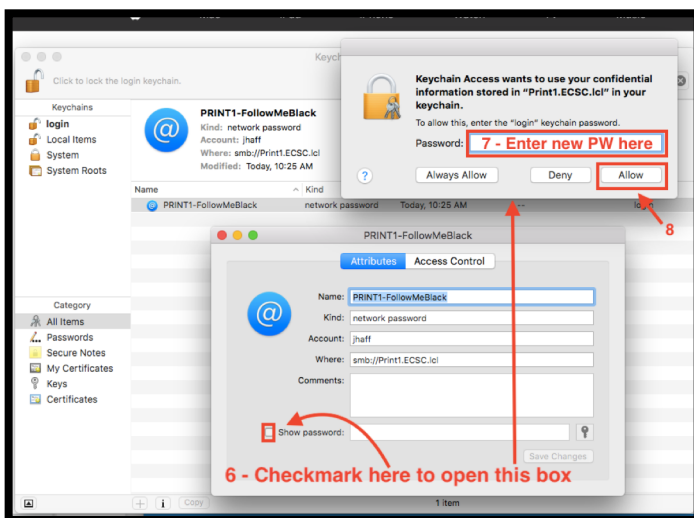
1. Click the Spotlight Magnifying Glass
2. Type in 'keychain access'
3. Click to open 'Keychain access' as shown by #3 to the right



4. Type 'Follow' into the search box and look for Print1-FollowMeBlack



5. Double-click the FollowMe entry to open its dialog box



6. Click to checkmark by 'Show Password'
7. Fill in New password in the resulting dialog box
8. Click Allow

9. Fill in your new password
10. Click Save Changes

